

# Alaska Department of Fish and Game

Habitat Section  
Southeast Region



## East Port Frederick Uncataloged Stream

## ADDITION

**Water body name:**

**Survey date:** 8/23/2022

**Quad:** Juneau A-5

**Species & Lifestage:**

**Upper Reach Latitude:** 58.045047 **Longitude:** -135.546118

**Survey crew:** FC, RR

**Lower Reach Latitude:** 58.044968 **Longitude:** -135.549966

**Findings:** We surveyed this uncataloged stream using a backpack electrofisher and GPS. We captured juvenile coho salmon, Dolly Varden, and sculpin. The stream flows through a gravel channel under a log-stringer bridge and into the intertidal, dropping into a reach of 6-8% gradient as it approaches the tree line (Table 1; Figures 1–3).

**Recommendations:** Add this uncataloged stream to the anadromous waters catalog for rearing coho salmon (Figure 4).

**Nomination:** Pending

Table 1.—Uncataloged stream survey data.

Waypoint	Latitude	Longitude	Notes	Stream Width ft	Stream Substrate	Habitat Features	Gradient %	Sample Effort	Sample Results
1460	58.044746	-135.543729	Stream with slightly incised channel crossing under log-stringer bridge. Log on downstream side starting to collapse. Start of survey. Resident fish capture only.	6-8	Small Gravel Large Gravel	Incised Channel	2-4	EF	3 DV
1461	58.044649	-135.543296	Increased gradient (compared to downstream at bridge). Continued resident fish capture up to 3' tall log jam/rootwad falls with small jump pool, followed immediately upstream by 1' tall falls. Advancing downstream.	4-6	Small Gravel Large Gravel		4-6	EF	2 DV
1462	58.045041	-135.544766	Continued resident fish capture. Some small (1-2' tall) falls with jump pools. Suspect downstream barrier.	4-6	Small Gravel Large Gravel	Incised Channel	4-6	EF	3 DV
1463	58.045050	-135.546142	Increased gradient of 6-8% for 100-200' starting ~150' upstream of waypoint. Gradient decreases approaching tree line. 1-yr CO capture; one fell from net.	4-6	Small Gravel Sand		1-2	EF	2 CO 2 SC 1 DV



Figure 1.—Juvenile coho salmon captured at waypoint 1463.



Figure 2.—Channel at waypoint 1460.



Figure 3.—Log jam falls at waypoint 1461.



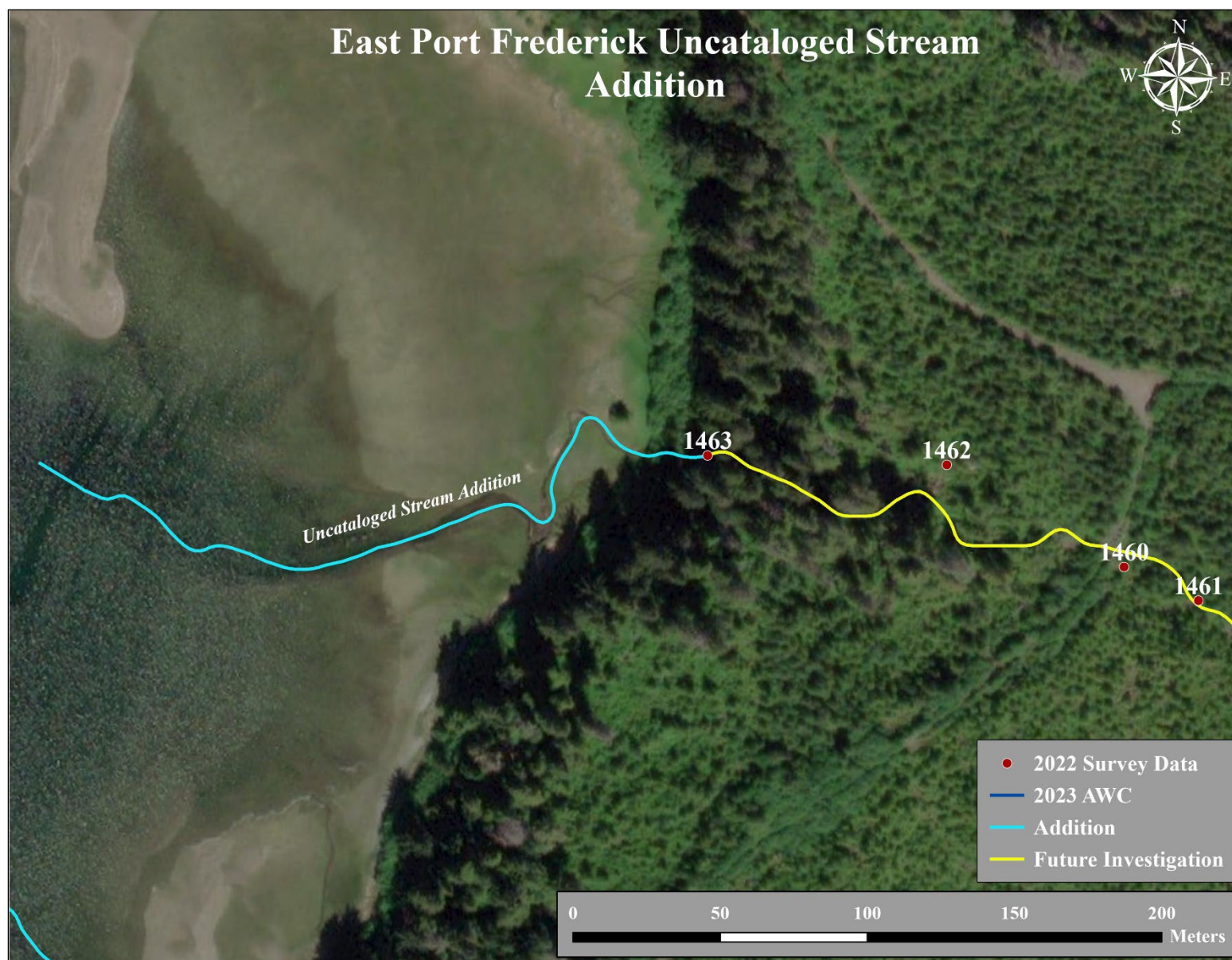


Figure 4.—Uncataloged stream addition map.